

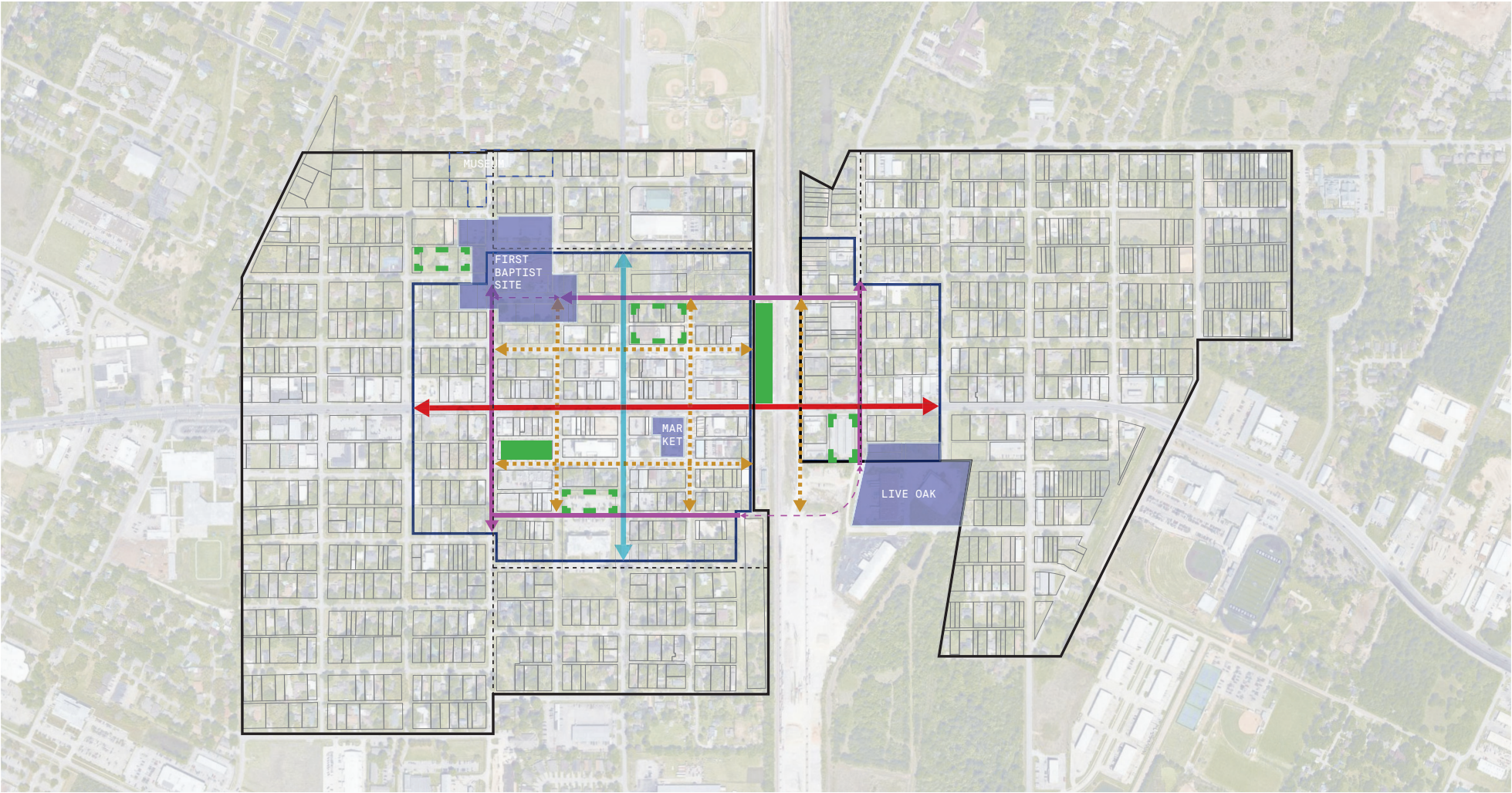
Tomball Economic Development Corp.

FBC Conceptual Design Update

PROJECT DRIVERS

- Create an arts and cultural district that's reflective of Tomball's unique heritage and historic downtown district.
- Build on the existing fabric of the First Baptist Church site to create a vibrant public space with unique commercial spaces, venues, and outdoor amenities.
- Create opportunities for local businesses to grow and thrive and drive local economic development.

SITE CONTEXT



Old Town Tomball - Major Thoroughfares & Proposed Improvements

MAJOR ARTERIAL	MINOR ARTERIAL	PARKING	PEDESTRIAN IMPROVEMENT CORRIDORS	OLD TOWN CORE STREETS - PEDESTRIAN / AUTO CONNECTIVITY
----------------	----------------	---------	----------------------------------	--

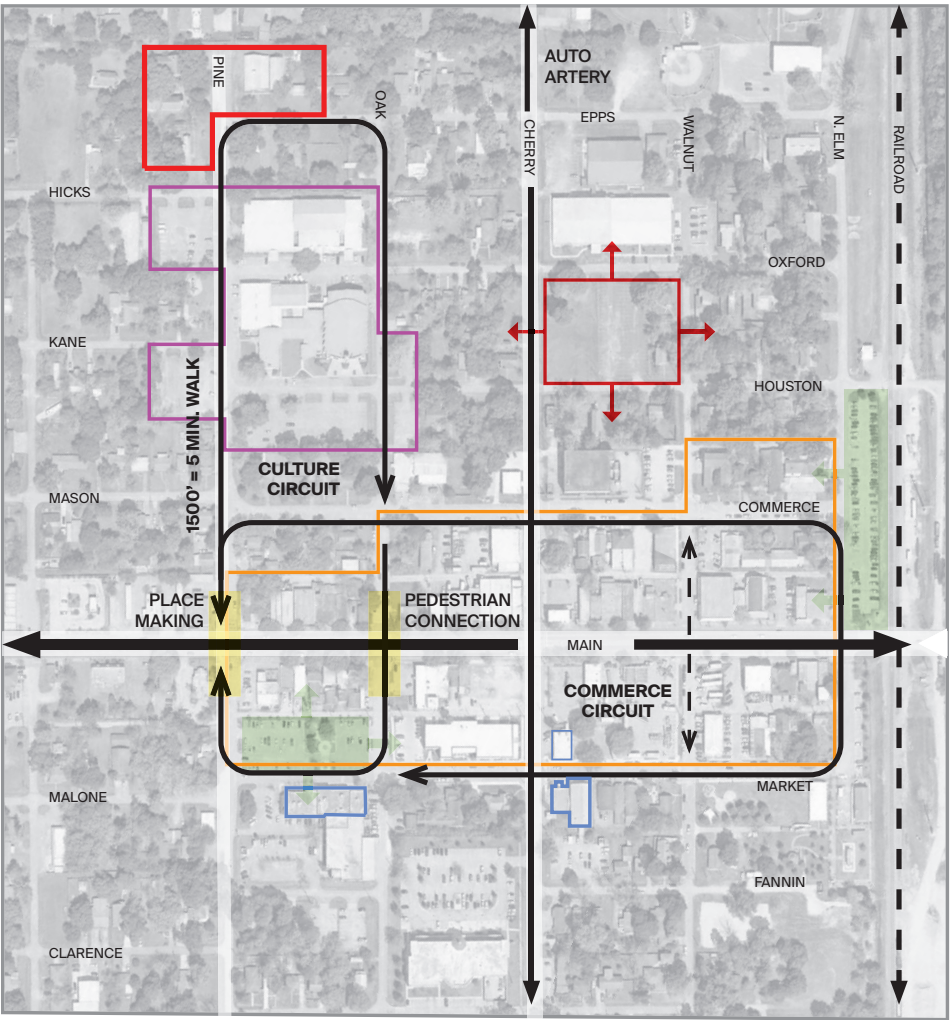
CULTURE & COMMERCE

The diagram at right proposes a framework of complementary “circuits” to conceptualize how current conditions might be cultivated through future development. In this framework, the streets north and south of Main Street are thought of as part of the “Commerce” Circuit, a walkable, retail-oriented shop district. An intersecting “Culture” Circuit (defined in greater detail on the next page) links the Museum Center, the current First Baptist Church Site, Main Street, and the current City Hall building on Market Street.

Here, the places where these circuits overlap and intersect with each other and with Main Street become sites of concentrated activity: a pedestrian connection along Oak Street, or the insertion of placemaking components at Pine and Main.

The dimensions of these circuits - approximately 1500' in length, or about 5 minutes' walk - make them eminently walkable and perfect sites for continuing the type of dense, community-oriented development that already characterizes Old Town Tomball.

- KEY
- OLD TOWN COMMERCIAL ZONE
 - CURRENT CITY PROPERTIES
 - FIRST BAPTIST CHURCH PROPERTY
 - TOMBALL MUSEUM CENTER
 - PARKING - EXISTING
 - PARKING - PROPOSED



FIRST BAPTIST CHURCH SITE

FBC Site Vision Plan

SITE AREAS

204,600SF Total on 8 Lots as Shown
4.63 acres

PRIMARY BUILDINGS

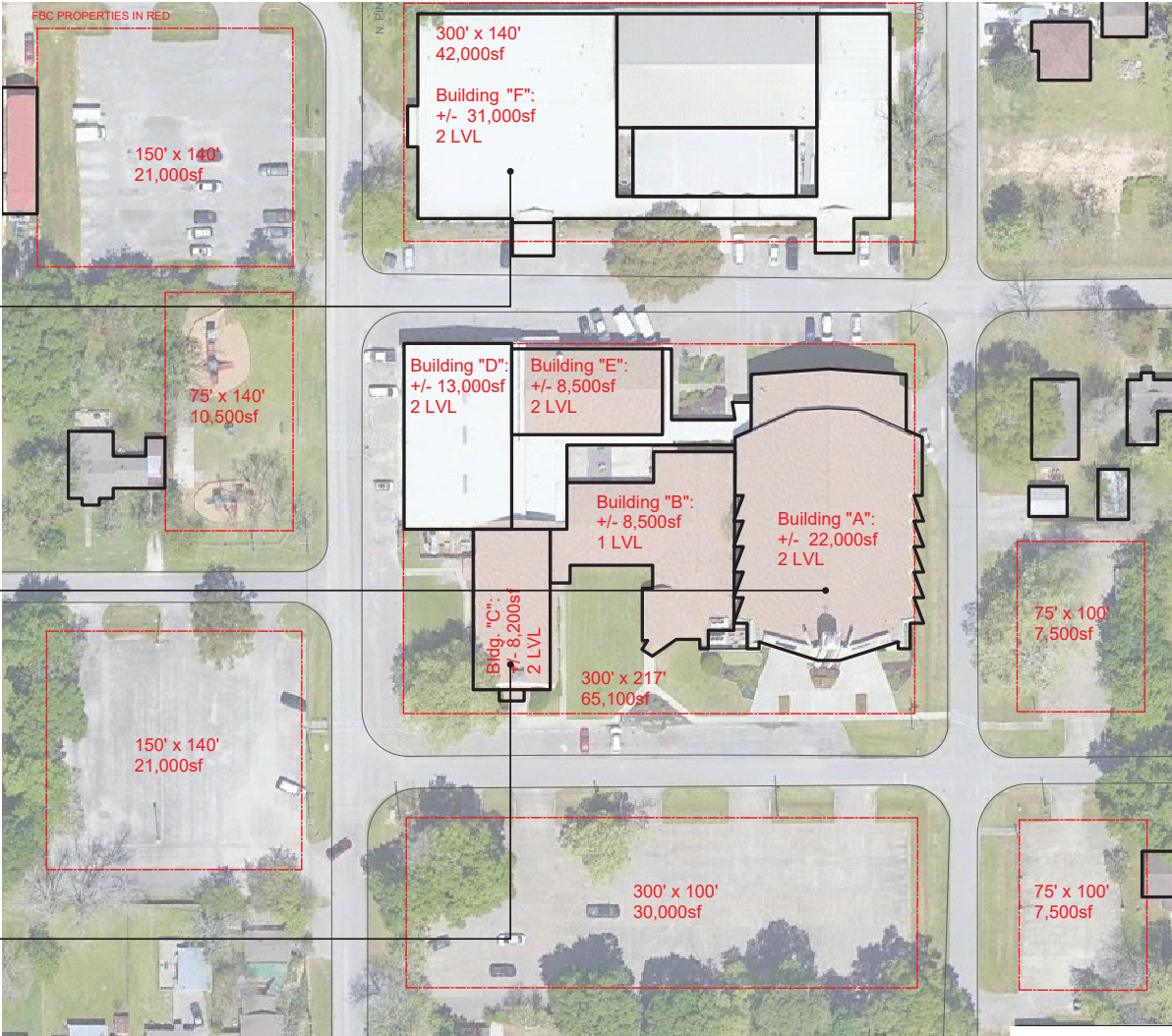
Fellowship Hall
+/- 31,000sf on 2 Levels
+/- 27,000sf Ground Level



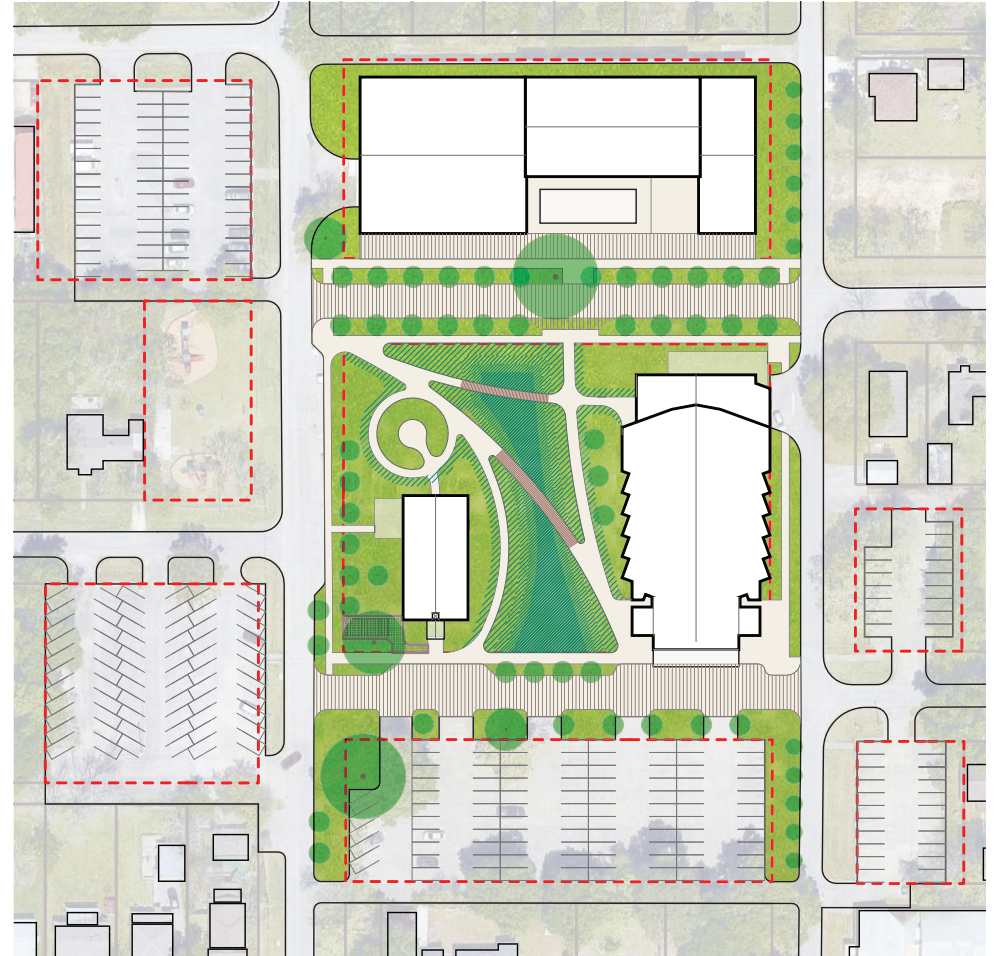
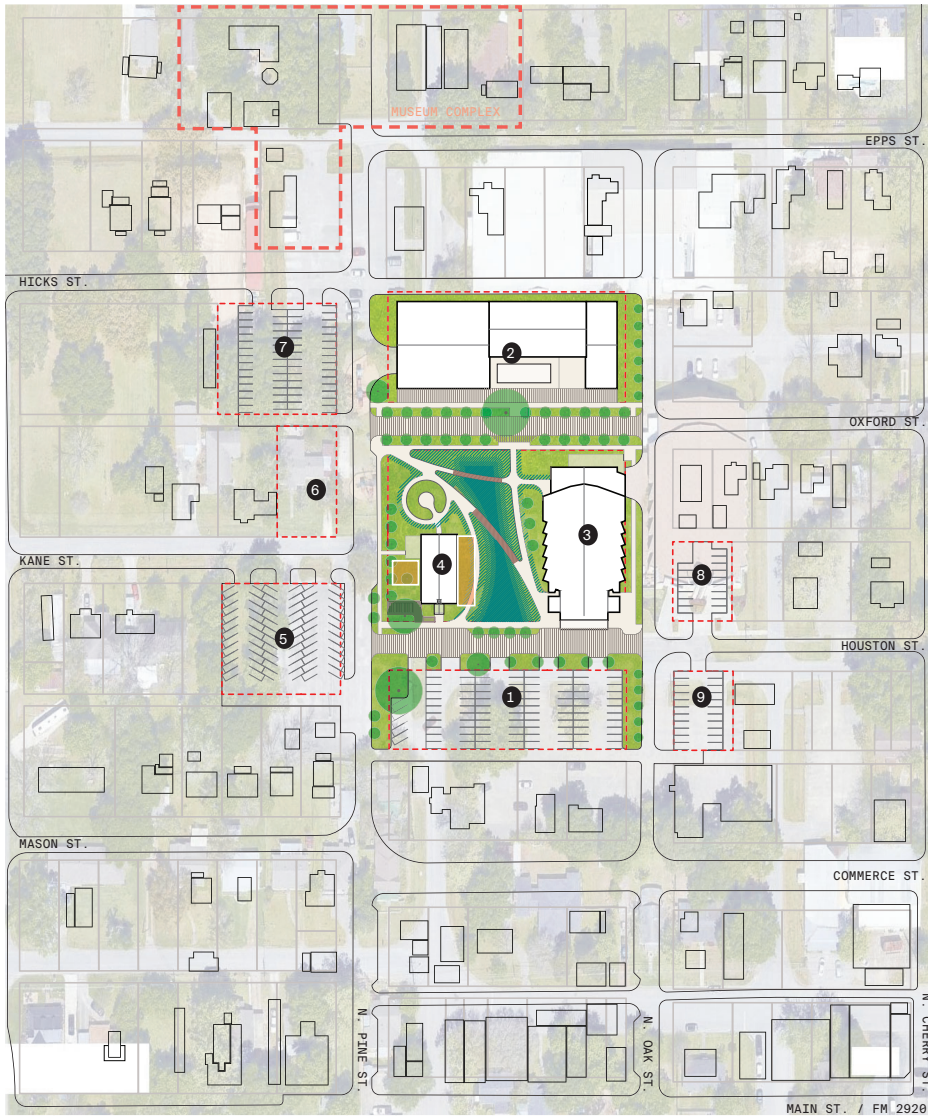
Building A: Main Sanctuary
+/- 22,000sf on 2 Levels
+/- 12,000sf Auditorium



Building C: 1949 Sanctuary
+/- 5,000sf on 1+ Levels
+/- 4,000sf Ground Level



FBC Site Vision Plan



Main Sanctuary

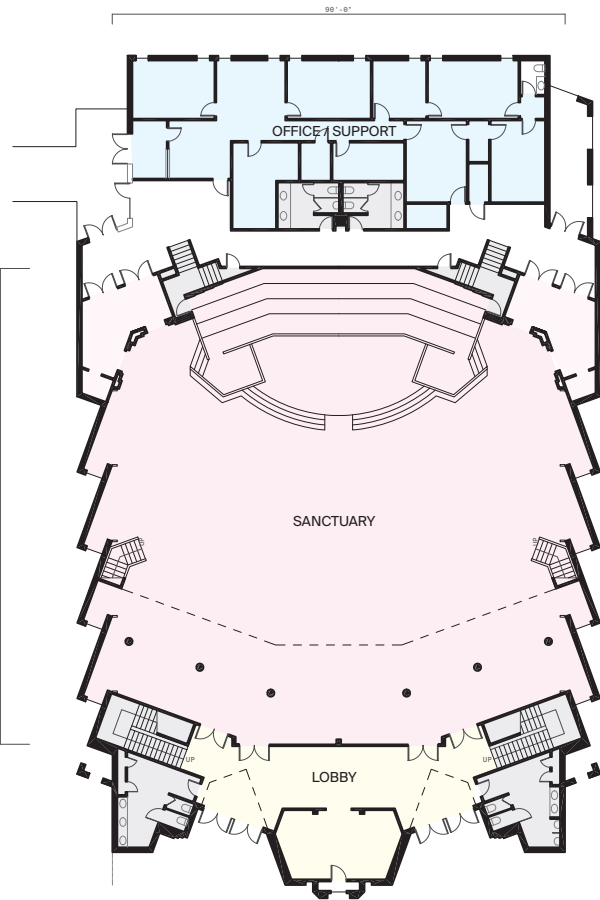
MAIN SANCTUARY: TOM BALL HALL

FBC Site Vision Plan

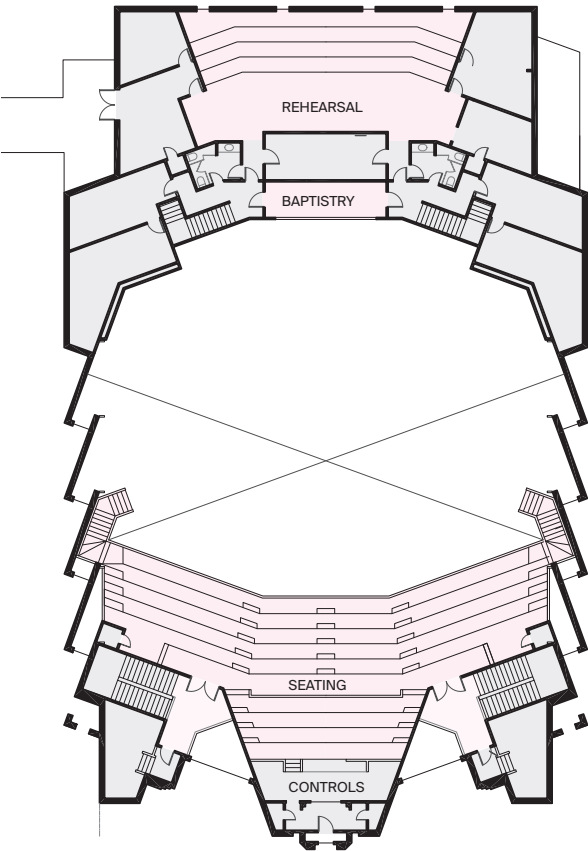


EXISTING MAIN SANCTUARY

FBC Site Vision Plan



LEVEL 1 / GROUND
NTS



LEVEL 2

Legend

- Gathering / Assembly
- Food / Dining
- Performance / Seating
- Office
- Support

Key Areas

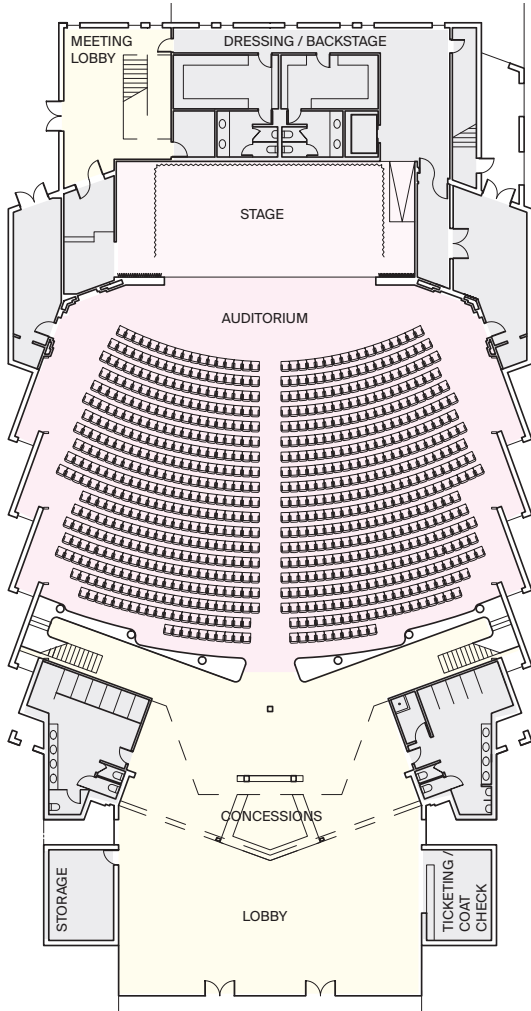
Lobby	1100sf
Sanctuary	8100sf
Level 2 Seat.	2250sf
Office	
Rehearsal	1100sf
Total Area	23,900sf

Capacities

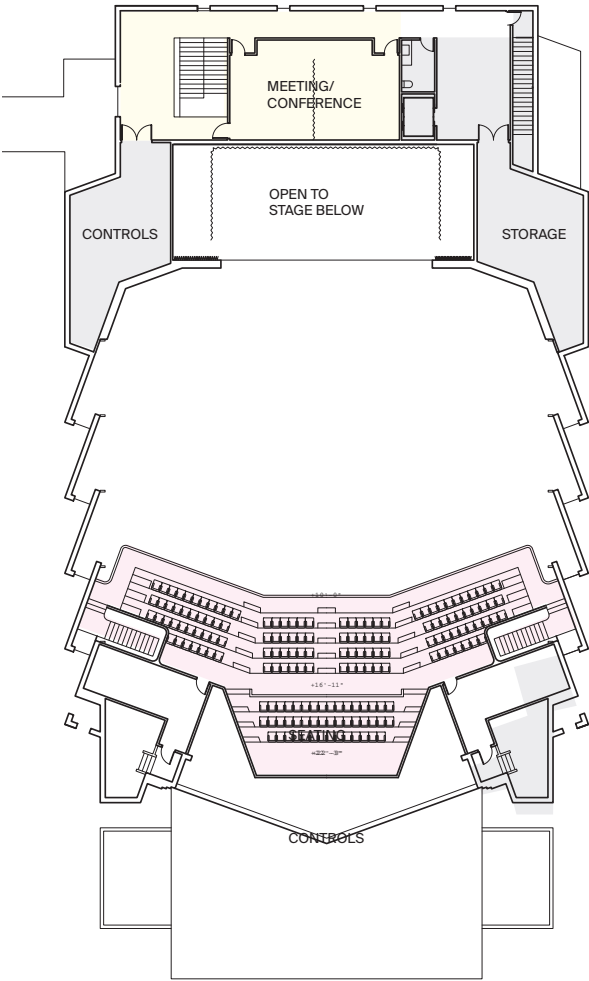
Sanctuary	As Configured: 700 stated (+/- 550 Level 1, 150 Level 2)
	Pews Removed: +/- 1,850

MAIN SANCTUARY AS A 1,000 SEAT AUDITORIUM

FBC Site Vision Plan



LEVEL 1 / GROUND
NTS



LEVEL 2

Notes

In this test fit, the stage configuration is changed from a thrust stage (current) to a proscenium stage in order to allow more space for audience seating. The prefunction area has expanded to account for the additional audience population.

Legend

- Gathering / Assembly
- Food / Dining
- Performance / Seating
- Office
- Support

Key Areas

Lobby	4,000sf
Main Hall	6500sf
Level 2 Seat.	2250sf

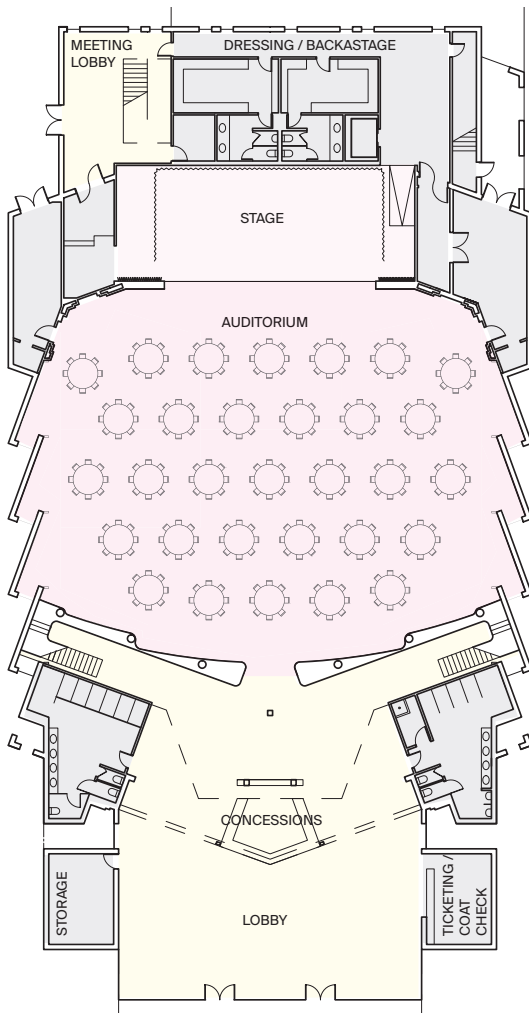
Capacities As Configured

Seating	+/- 1,000
	(+/- 850 Level 1, +/-150 Level 2)

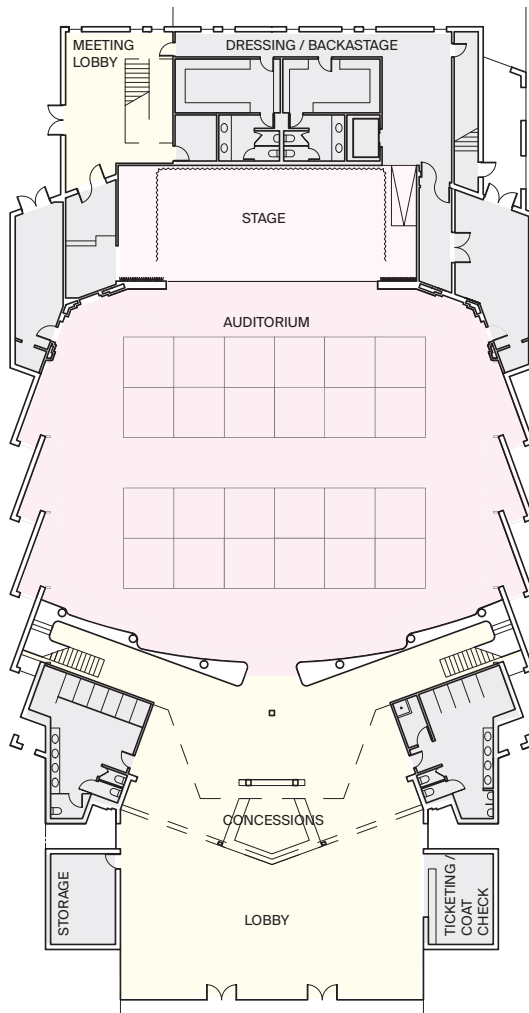
Stage Dims	23' x 60' (22' x 44' performance area)
------------	--

MAIN SANCTUARY:
ALTERNATE CONFIGURATIONS

FBC Site Vision Plan



BANQUET
+/- 250 SEATS



EXPO / FAIR
+/- (24) 10' X 10' BOOTHS

- Legend
- Gathering / Assembly
 - Food / Dining
 - Performance / Seating
 - Office
 - Support

1949 Chapel

1949 CHAPEL

FBC Site Vision Plan



Synchro